

TWO DAY WEBCAST AUCTION - FORMER ASSETS OF GLOBAL HVAC MANUFACTURER'S 650,000 SQFT PRODUCTION & ASSEMBLY PLANT FEATURING SALVAGNINI PUNCHES & BENDERS, CUT-TO-LENGTH LINE, PRESS BRAKES, SHEARS, TURRET PUNCHES, WATER JETS, (75+) PCS OF MATERIAL HANDLING, (150+) BRIDGE CRANES, TOOLROOM MACHINERY, MAINTENANCE EQUIPMENT & OVER 500 LOTS OF SHOP & SUPPORT EQUIPMENT

BidSpotter.com
See Instructions on Page 7
To Become a Qualified Bidder on the Internet

WEBCAST AUCTION



TRANE

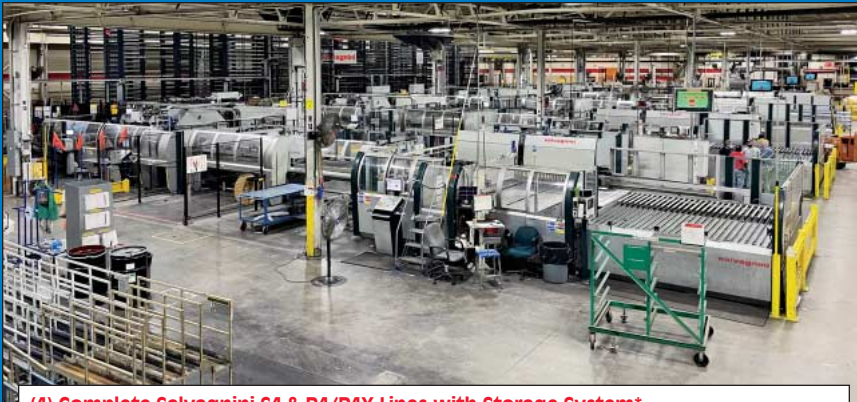
Plant Closed

TRANE

1515 Mercer Road – Lexington, Kentucky 40511 3 Miles North of Downtown Lexington

SALE DATES: WEDNESDAY, DECEMBER 8TH & THURSDAY, DECEMBER 9TH, STARTING AT 10:00 AM

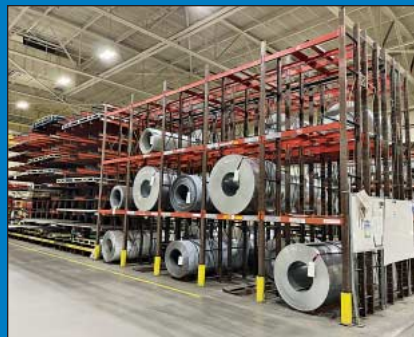
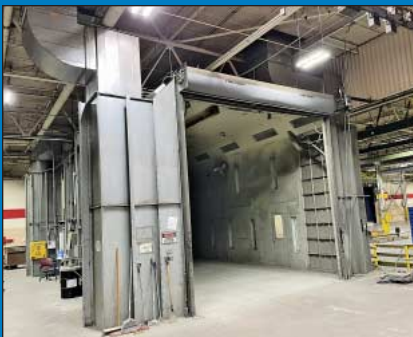
Inspection: Monday, December 6th and Tuesday, December 7th from 10:00 AM to 4:00 PM



(4) Complete Salvagnini S4 & P4/P4X Lines with Storage System*



72" x 40,000 LB x 0.135" Cincinnati CTL



(1 of 2) Cincinnati CNC Press Brakes



(1 of 3) CNC Turret Punch Presses



Sale Under The Management Of

CINCINNATI INDUSTRIAL AUCTIONEERS

auctioneers | appraisers | since 1961 | cia-auction.com | info@cia-auction.com

2020 Dunlap St., Cincinnati, Ohio 45214 Phone 513-241-9701 Fax 513-241-6760



(1 of 4) Salvagnini S4 CNC Punching/Shearing Centers*



(1 of 4) Salvagnini P4/P4X CNC Panel Benders*



SALVAGNINI PUNCHING CENTERS & PANEL BENDERS*

(5) Salvagnini S4.30 CNC Punching/Shearing Centers*; S/N, S4_1185 (2007), S4_1116 (2006), S4_1065 (2005), S4_1066 (2005) & S640 (1998) Max Sheet: 120" x 65", Max Sheet Diagonal: 137", Min. Sheet: 15" x 12", Punching: Technology multi-press head, Punching tool change time (s) 0 (each tool is always ready to use), Possible of Activating (2) or More Tools Simultaneously, Max

Material Thickness: Aluminum- UTS 265 N/mm2 38500 psi 0.20" / 6, Steel - UTS 410 N/mm2 59500 psi 0.14" / 10 S.S. - UTS 610 N/mm2 87000 psi 0.08" / 14, Min. Thickness: 0.02" / 25 ga., Type of Multi-Press Head H3, Max no. of punches in head 96, Auto Index: 2, Shearing: Technology independent or simultaneous cuts on X and Y, Blade clearance adjustment automatic, Length of shear blades X x Y (in) / (gage) 19.5" x 19.5", Max Thickness: Aluminum - UTS 265 N/mm2 38500 psi 0.20" / 6, Steel - UTS 410 N/mm2 59500 psi 0.14" /

10, S.S. - UTS 610 N/mm2 87000 psi 0.08" / 14, Min. Thickness (mm)(in) / (gage) 0.02" / 25, Dynamics, Max Speed: X axis (in/min) 5,196, Y axis (in/min) 3,779, Speed with both axis moving simultaneously (m/min) (in/min) 6,417 Maximum acceleration: X axis (ft/s2) 98, Y axis (ft/s2) 49, Equipped with TRLA3215 Electrically Motorized Roller Surface, S4S.30.HU1515.SIX.NT.H3 Punching Machine, C55 Right-Angle Shear, PU30.PU31 Puncher, EI09 Lower Cylinder,

P2R3233.PR@3435 Double Indexing Punch, DF Sheet Deviator, IBC Print Ink-Jet Marking, SC115C Bin Unloader, IA3015 Automatic Universal Stacker, (2) TC30155D Scissor Tables, R161E Water-air Cooler *SUBJECT TO WITHDRAW BY OWNER

Salvagnini P4X 3216 CNC Panel Bender*; S/N 135158 (2011) Configuration: S4+TC30155E:CT.RPC+PCD3015.R VA.VE1.MOTAX+P4X-3216.lsa1.lia.ABA30/400/130ZL.ZT L/RBU1.LK.SPA.NS.CLA/A.CLA/N.

PSE.UC1000.UC1000N+SAP3416 18.POS, Max Length Incoming Sheet: 120", Max Width Incoming Sheet: 60", Max Diagonal Rotation: 126", Max Bending Force: 660 kN, Max Clamping Force: 1060 kN, Max Bending Length: 95.4", Max Bending Height: 8", Min Thickness: 25 Ga., Max Thickness & Bending Angle Steel, UTS 410 N/mm2 (gage): 11 (±90°) / 13 (±130°) / 14 (±135°), Max Thickness & Bending Angle Stainless Steel, UTS 660 N/mm2 (gage): 13 (±90°) / 14 (±125°) / 16 (±135°), Max Thickness & Bending Angle



(4) Complete Salvagnini S4 & P4/P4X Lines with Storage System*
*SUBJECT TO WITHDRAW BY OWNER



Massive 653-Shelf Storage System*
*SUBJECT TO WITHDRAW BY OWNER

Aluminum, UTS 265 N/mm2 (gage): 7 ($\pm 120^\circ$) / 8 ($\pm 130^\circ$) / 9 ($\pm 135^\circ$), Intelligence No waste. Proprietary MAC 2.0 Technology, Automatic Unloading, Responsiveness Panel Bending 4.0., Flexibility Universal Bending Tool from 28 to 11 Ga., Universal Bending Tool with Optimized Profile & Proprietary Kinematic System for Bending from 28 to 11 Ga. *SUBJECT TO WITHDRAW BY OWNER

(3) Salvagnini P4 3216 CNC Panel Benders*; S/N 5101143 (2008), 5101015(2006) & 5100931(2005), Max Length Incoming Sheet: 120", Max Width Incoming Sheet: 60", Max Diagonal Rotation: 126", Max Bending Force: 660 kN, Max Clamping Force: 1060 kN, Max Bending Length: 95.4", Max Bending Height: 8", Min Thickness: 25 Ga., Max Thickness & Bending Angle Steel, UTS 410 N/mm2 (gage): 11 ($\pm 90^\circ$) / 13 ($\pm 130^\circ$) / 14 ($\pm 135^\circ$), Max Thickness & Bending Angle Stainless Steel, UTS 660 N/mm2 (gage): 13 ($\pm 90^\circ$) / 14 ($\pm 125^\circ$) / 16 ($\pm 135^\circ$), Max Thickness & Bending Angle Aluminum, UTS 265 N/mm2 (gage): 7 ($\pm 120^\circ$) / 8 ($\pm 130^\circ$) / 9 ($\pm 135^\circ$), Intelligence No waste. Proprietary MAC 2.0 Technology, Automatic Unloading, Responsiveness Panel Bending 4.0., Flexibility Universal Bending Tool from 28 to 11 Ga., Universal Bending Tool with Optimized Profile & Proprietary Kinematic System for Bending from 28 to 11 Ga., Equipped with PDC3015.VE1/TC30155E.CT.RPC Conveyor with Side Load Table & Destacker, P4-3216.LSR1.LIR.ALA25-570-140.ZL.CLA-A.UC1000V Bending Unit with ALA Blankholder & 2.5mm Thick Bending Blades, SAP341618.POS SAP Unloading Device with Gravity Tilt & Unloading Door, SIX.NT Machine Control *SUBJECT TO WITHDRAW BY OWNER

Salvagnini P4 1812(So) CNC Panel Bender*; S/N 2000502, Order Number 55/00 (2000),

Configuration: MD30156+ACP2715+P4-1812.LS.LI.CLA.ALA30/510/200.ZL+SAP2015.POS+R81 Max Bending Length: 72.83", Max width of finished Panel: 59.05", Max Diagonal of incoming sheet: 84.64", Max length of incoming blank: 78.74", Max width of the blank: 59.05", Max bend height: 5.0", Max thickness of material at 400 N/mm2 (m/s): 2mm, Bending angles obtainable: -125 Deg to +125 Deg with 6-Shelf Tivox Maskin Type HL 587-1-6 Material Tower; Project No. 593, 4,500 LB/Shelf **LOCATED IN RUSHVILLE, INDIANA** *SUBJECT TO WITHDRAW BY OWNER

Two-System 653-Shelf Salvagnini Storage Systems*:

- First System Model MV034 Double Row Tower System: 418 Total Shelves, 394 Available for Storage, 6,614 LB Max Weight per Tray, 135.2ft Long by 17.4ft Wide x 25.6ft High, S/N MV_0034 (2005); Picker Crane Max Horizontal Speed: 2.5m/Second, Max Horizontal Acceleration: 0.5m/Second, Max Vertical Speed 0.5m/Second, Max Vertical Acceleration: 0.5m/Second, Pitch Between Levels: 280mm, Max Height Of The Single Pack: 130mm, Max Height Of Double Pack 410mm. Equipped with T3.3015.P280.L22.V2.P Picker Crane, (15)MS.3015 Single Module, MA.3015.C11F/CFL3015 & MA.3015.C13F/CFL3015 Feeding Module with Trolley with Pegs, MIS.3015.ISD Module, MIE.3015.SPV.AFT/TLV3015 Module, SMD30.H70.MPS.RBP Manipulator/Destacker Station, DA30.AFF Angular Deflector, MMACH.NT Micromach

Control, POSAUX Secondary PC, WMSCLT.FAN WMS Software

- Second System Model MV046 Double Row: 235 Total Shelves, 223 Available for Storage, 6,614 LB Max Weight per Tray, 116ft Long by 17.4ft Wide x 25.6ft High, S/N MV_0046 (2007).. Equipped with T3.3015.P280.L22.V2.P Picker Crane, (9)MS.3015 Single Module, MA.3015.C11F/CFL3015 & MA.3015.AFT/CMFC3015 Feeding Module with Trolley with Pegs, MIS.3015.ISD Module, SMD30.H70.MPS.RBP Manipulator/Destacker Station, DA30.AFF Angular Deflector *SUBJECT TO WITHDRAW BY OWNER

CUT TO LENGTH LINE 72" Wide x 40,000 LB x 0.135" Cincinnati Cut-to-Length Line; S/N 91542, Consisting of:

Model C.P.R. 72 40 .250 Coil Payoff Reel and Car; S/N 91542, 72" W x 40,000 LB; with Holddown Arm; Model C.P.T.B. 72 - .250 Transfer Table; S/N 91621, 72" Wide; Model L.E.G 72 - 0.187 Lateral Edge Guards; S/N 91623; Model C.S. 72 - .250 Crop Shear; S/N 91622, 0.250" Thick x 72" Wide; Herr-Voss Keystone Leveler L.H. 84/2.187-19/7 4 Hi; S/N 14296, 5-Independent Position 125 HP Philadelphia Motor; Model D.H.E.T. 72 - 0.135 Dual Head Edge Trimmer; S/N 91625, 0.135 x 1.25 Per Side at 50,000 PSI Shear; Model S.C. 72 - 0.135 Scrap Shute; S/N 91626, 0.135 x 1.25 Per Side at 50,000 PSI Shear; Model S.C.V. 72 Scrap Conveyor; S/N 91627; Model Q.R. Quadrant Roll- Loop Pit; S/N 91628, 72" x 0.135" Thick; Model Roll Feed; S/N 91558, 0.187" Thick x 72" Wide High Speed Shear; 72" x 144" Model S.U. Side Disch. Stacking Unit; S/N 91630, 12' x 72"



Salvagnini P4 1812 CNC Panel Bender



72" x 40,000 LB x 0.135" Cincinnati CTL



Herr-Voss Keystone Leveler L.H.84/2.187-19/7-4-Hi



135 Ton x 12' Cincinnati Autoform CNC Press Brake



230 Ton x 12' Cincinnati Autoshape CNC Press Brake



(1 of 2) 1/4' x 10' Cincinnati Shears



30 Ton Amada Vipros 268 King CNC Turret Punch Press



30 Ton Nisshinbo HIQ 1525 CNC Turret Punch Press



50 Ton Wiedemann Magnum 5000 CNC Turret Punch Press



(1 of 3) 6' x 12' Flow CNC Flying Bridge Waterjet Tables

CNC PRESS BRAKES

230 Ton x 12' Cincinnati Model 230 AS x 10 FT. Autoshape Press Brake; S/N 43965, 126" Between Housing, Crowning, Autoshape CNC Backgage, 10" Stroke, Link Lite Black Max Light Curtains

135-Ton x 12' Cincinnati 135 AF x 10 FT Autoform Press Brake; S/N 45814, 126" Between Housing, 8" Max Stroke, Crowning, CNC Control with Backgage, Link Lite Black Max Light Curtains

OBS PRESS

175 Ton Cincinnati 175 OBS Hydraulic Gap Frame Press; S/N 43884, 10" Stroke, 22? Daylight, 50? x 30? Bed, 34? x 24? Ram, 35? Distance between Housings

SHEARS

(2) 1/4' x 10' Cincinnati Models 1810 & 1810G Mechanical Shears; S/N 43336 & 47035, CNC Front & Back Gage

CNC TURRET PUNCH PRESSES

30 Ton Amada Vipros 368 King CNC Turret Punch Press; S/N 36820019, (58) Station, (4) Auto-Index Stations, 60" x 80" Max Sheet, 60" Throat, 3 Clamps, Fanuc 04PC CNC Control, Scrap Conveyor

30 Ton Nisshinbo Model HIQ-1525 CNC Turret Punch Press; S/N HIXH983001, (37) Station Turrent, (3) Auto-Index Positions, Thick Turret Tooling, 50mm Stroke, 210 mm/s Max Ram Speed, Sheet Size: 60" x 100", 6.35mm Max Sheet, (3) Clamps, Scrap Conveyor

50 Ton Wiedemann Magnum 5000 CNC Turret Punch Press; S/N N/A, (52) Station Turret, (2) Auto-Index Stations, 60" x 72" Sheet Size, 1/2" Max Sheet (2) Table Clamps, Fanuc 6M CNC Control, Scrap Conveyor

CNC WATERJET TABLES

(3) 6' x 12' Flow Model 044917-1 CNC Flying Bridge 3-Axis Waterjet Tables; S/N 437634 (2009), 419579, 25714 (2011), 60,000 PSI Intensifier with 50 HP Motor, (2) with Dimplex KV3000 Chillers, (1) with Ebbco CLS-60000IL-3 Inline Chiller, Ebbco Model GRS-0303-B-CC-Vortex High Pressure Pumps & Ebbco Model CLS-141-24KHE Water Filter Systems, 22 Cubic Feet Media Pots

CO2 LASERS

2,000 Watt Cincinnati CL-707 CNC CO2 Laser; S/N 50371, 5' x 10' Sheet Size, with Rofin Sinar Laser 2000 SMX Power Source; S/N 598 000, Koolant Kooler Chiller and FARR Dust Collector

PAINT & CURE BOOTHS

Pass-Thru Paint & Cure Booth; 28' Wide x 45' Long x 16' High Overall, 20' Width x 43.5' Long Inside, 16' x 16' Door, with AbsolutAire Model R349-HVX Non-Recirculating Direct Fired Industrial Air Heater; S/N 24278, 36,000 CFM, Natural Gas Heater, 3,694 MBH Burner Capacity, 130 Degree Max Discharge Temp., 93 Degree Max Temp. Rise, 25 HP Motor **(New 2008)**

Pass-Thru Paint & Cure Booth; 20.5' Wide x 43' Long x 16' High Overall, 19' Width x 42' Long Inside, 11.8' Wide x 16' High Door, with AbsolutAire Model R349-HVX Non-Recirculating Direct Fired Industrial Air Heater; S/N 24278, 36,000 CFM, Natural Gas Heater, 3,694 MBH Burner Capacity, 130 Degree Max Discharge Temp., 93 Degree Max Temp. Rise, 25 HP Motor **(New 2008)**

PANEL FOAM PRESS*

Krauss Maffei 5-Platen Foam Panel Pres*; S/N 36010014, 6' x 12' Tables, with (2) Tanks, (2) RS-Compact 40 Pumps and Krauss Maffei Hydraulic Unit, Sterling SMCA 10 Chiller and Mixing Head
**SUBJECT TO WITHDRAW BY OWNER*

BULK FOAM SYSTEM*

Hennecke Polyurethane Technology Bulk System*; Project P0004 with (2) 7,500 Gallon Poly and Isocyanate Tanks, Transfer Pumps with ABB Robot and Mix Head, Mettler-Toledo Tank Mounted Scales
**SUBJECT TO WITHDRAW BY OWNER*

WASHER (Located in Columbia, SC)

(2) 72" Wide Multi-Stage Cabinetized Wash/Rinse/Blow Off Systems; See Website for Drawings & Details

AUTOBRAZER (Located in Clarksville, TN)

Coil Auto Braze System (New 2017) See Website for Drawings & Details

TOOLROOM MACHINERY & RELATED

75 KVA Weld-o-Matic Model AF-2BSpot Welder; S/N 3298

Boschert Type LB15KS8/32 Notcher; S/N 716

36" Tannewitz Type 36MS Vertical Band Saw; S/N 13945 with 16 AMP Blade Welder

Miller Trailblazer 302 Welder/Generator; S/N N/A, 10,500 Watt Generator, 300 AMP Weld Output, with Miller Series 60 Wire Feeder

(2) Miller XMT 350 & 300 CC/CV Welders; with Miller Wire Feeders

300 AMP Miller 330ST Aircrafter Arc Welding Power Source; JH187500

Miller Filtair MWX-S Fume Collector; S/N MC013400U

10" SawStop Model ICS53480 Industrial Cabinet Saw; S/N 1165202884

4' x 9" Column Carlton Radial Arm Drill; S/N N/A, 100 to 2,000 Spindle RPM, 30" x 24" x 17" H Table

12" x 30" Thompson Surface Grinder; S/N N/A with Magnetic Neurofier II Control Station

LIFT TRUCKS, PALLET TRUCKS & RELATED

6,000 LB Hyster Model S60XM Cushion Tire LP Gas Lift Truck; S/N D187V26042Z

8,000 LB Toyota Model 7FGCU35 Solid Tire LP Gas Lift Truck; S/N 62477

(6) 6,000 LB Toyota Model 8FGCU30 Solid Tire LP Gas Lift Truck; S/N 19516, 18193, 10652, 18192, 20079, 19506

(2) 6,000 LB Toyota Model 7FGCU30 Solid Tire LP Gas Lift Truck; S/N 66211, 66220

10,000 LB CAT Model GC45KSWB Solid Tire LP Gas Lift Truck; S/N ATB701284

9,000 LB CAT Model P9000 Solid Tire LP Gas Lift Truck; S/N AT29D50103

7,000 LB CAT Model GC35K Solid Tire LP Gas Lift Truck; S/N AT8700286

(2) 6,000 LB CAT Model GC30K Solid Tire LP Gas Lift Truck; S/N AT83C01240, AT83C01220



28' W x 45' L x 16' H Pass Thru Paint & Cure Booth



20.5' W x 43' L x 16' H Pass Thru Paint & Cure Booth

6,000 CAT Model C6000 Solid Tire LP Gas Lift Truck; S/N AT83F02436
 (3) 5,000 LB CAT Model GP25K Solid Tire LP Gas Lift Truck; S/N AT17B11856, AT17B11830, AT17B11841
 (7) 4,000 LB CAT NRR40 Stand-Up Electric Lift Trucks; 24V
 CAT Model NOR30P Electric Order Picker; S/N 2LL-03273

(6) 10,000 LB Advance Vehicles Model PRS100 Electric Ride On Double Length Pallet Truck; S/N 99433, 48" Platform Length, 24V
 6,000 LB CAT NPP60 Electric Pallet Jack; S/N N/A, 24 V

(6) Electric Pallet Jacks by CAT, Crown, Linde, Yale, Wesco
 (2) Drive-on Lift Truck Maintenance Lifts

TUGGERS

(3) Linde / Portman Model P60Z Electric Sit Down Tuggers; 24V
 (10) 8,000LB Linde Model ERC80 Electric Stand Up Tuggers; 24V

GOLF CARTS

(5+) E-Z GO Golf Carts; Gas Powered

AIR COMPRESSOR SYSTEM

200-HP Ingersoll Rand Model R160-A145 Air Compressor w/ Model NVC1200A400 Dryer and Tank (New 2010)

FLOOR SCRUBBER & SWEEPERS

Advance Model CS7000 48LP LP Gas Floor Scrubber; S/N 1000059660
 Tennant Model 6500 LP Gas Floor Sweeper; S/N 6500-5222
 (2) Advance CMAX 26 Walk Behind Electric Floor Scrubbers

ELECTRIC MAN LIFTS, SCISSOR LIFTS & RELATED

Skyjack Model SJIII4626 Electric Scissor Lift; S/N 714401, 26' Max Height, 1,000 LB Weight Capacity (2005)
 Skyjack Model SJIII3226 Electric Scissor Lift; S/N 274553, 26' Max Height, 500 LB Weight Capacity (2005)
 (8) Genie GS-1530 Electric Scissor Lifts; S/N See Catalog, 15' Max Height, 250 LB Max Weight
 Genie Z-20/8N Electric Boom Lift; S/N 350, 400 LB Max Load, 20' Max Height

(8) Genie Model GR-12 Runabout Electric Man Lift; S/N See Catalog, 11'9" Max Height, 500 LB Max Weight (New as 2015)

BATTERIES & CHARGERS

(15) 36 Volt Hobart Power Model 1050T3-18 Electric Battery Chargers
 (11) 24V Volt Hobart Model Accu-Charger Electric Battery Chargers

(6) 36 Volt Hawker Model PH3M-12-775 PowerGuard HD Battery Chargers

(5) MTC Triple Station Battery Charging Stations
 (4) MTC Single Station Battery Charging Stations

LOADING RAMP

20,000 LB CopperBoy Model SMR20-84-36L8R Loading Ramp; S/N 62377

OVERHEAD BRIDGE CRANES, JIBS & RELATED

(150+) Top Running and Underhung, Single & Double Girder Overhead Bridge Cranes up to 10 Ton; Examples: 1 Ton x 20'; 1 Ton x 30'; 2 Ton x 3 Ton x 20'; 4 Ton x 25'; 6 Ton x 40'; (2) 10 Ton x 75' - (1) with Abell-Howe Stak Master; Complete with Electric Chain Hoists

****See Catalog for Size & Capacities****

(50+) Free Standing and Column Hung Jib Cranes up to 2 Ton; Examples: 500 LB Gorbels; Complete with Electric Chain Hoists;

****See Catalog for Size & Capacities****

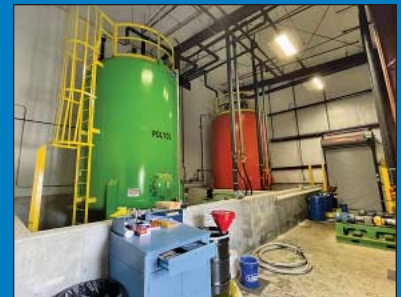
STRETCH WRAPPERS

96" Lantech Rotary Stretch Wrapper; S/N N/A

(2) Robopac Self Propelled Robot Stretch Wrappers



Krauss Maffei 5-Platen Foam Panel Press*



Hennecke Poly. Tech. Bulk System with (2) 7,500 Gal. Tanks *SUBJECT TO WITHDRAW BY OWNER



Coil Auto Braze System



200-HP Ingersoll Rand Model R160-A145 Air Compressor



Large QTY Toolroom Machinery



(1 of 2) 72" Continental Wash/Rinse/Blow Systems

NEW 2017



DECEMBER 8TH AND 9TH – 10:00 AM



(30+) Lift Trucks by CAT, Hyster & Toyota up to 10,000 LB



(20+) Electric Man Lifts & Scissor Lifts by Genie & Skyjack



(25+) Electric Pallet Jacks, Golf Carts & Various Tuggers



Floor Scrubbers & Sweepers, HD Electric Battery Charging Stations

PALLET RACK & CANTILEVER RACK
(74) 42" D x 108" W x 17' H T-Slotted Adjustable Beam Pallet Rack with Wire Decking
(55) Sections of 48" D x 9' W x 12' & 16' H T-Slotted Adjustable Beam Pallet Rack with 2" x 3" Uprights 4-1/2" Beams and Wire Decking

(16) Sections of 5' D x 5' W x 200" High Coil Reel Rack; (4) Sections High, 20,000 LB/section
(3) Sections of Double Sided HD Cantilever Rack; 5' Arms x 18' H
SHOP & SUPPORT EQUIPMENT
Over 500 Lots of Shop &

Support Equipment; including Dump Hoppers of Various Size, Banding Carts, Pallet Jacks, Carts, Tables, Benches, Air Hose Reels, Guard Rail, Scissor Lift Tables, Machine Skates, Chains, Slings, Come-alongs, Two-Door Cabinets, Flame-Proof Cabinets, Platform & Floor Standing Roller Conveyor, Fans, Zebra Label Printers, Three-

Wheel Maintenance Bikes, Fiberglass Ladders, Platform Ladders, Big Ass Fans, Generac Backup Generator, ANVER VPF-57-AC Vac-Pack Sheet Lifter, 25 KW Generac Model QT02524KNSNA
SCRAP
Large Opportunity for Scrap Metals

OFFICE FURNITURE & RELATED
70K SQFT of Office Furniture & Related; including Cubicles, Desks, Chairs, File Cabinets, Large Qty. Lockers & Break Area Furniture



Large Quantity of HD Adjustable Beam Pallet Rack



(150+) Bridge Cranes & Jib Cranes Up to 10 Ton



Over 500+ Lots of Shop & Support Equipment Sold Both Days

All Items Marked with * are SUBJECT TO WITHDRAW BY OWNER

WEBCAST BIDDER INSTRUCTIONS

> **Bidders in the United States** will receive approval forms from our office upon registering for the auction on [bidspotter.com](https://www.bidspotter.com), pending the Auctioneers review of the information provided you will be approved at the Auctioneers discretion.

> **Bidders outside of the United States** must post a deposit of approx. 25% of their planned spending budget or \$2,500.00 minimum with Cincinnati Industrial Auctioneers in order to be approved to bid. Those who do not post the deposit will not be approved. **period.**



Scan Here for our YouTube Playlist Featuring Operating Machines!

WEBCAST AUCTION

Plant Closed

TRANE

1515 Mercer Road
Lexington, Kentucky 40511

3 Miles North of Downtown Lexington

SALE DATES:
**Wednesday, December 8th &
Thursday, December 9th**
Starting at 10:00 AM

INSPECTION:
December 6th and December 7th from
10:00 AM to 4:00 PM



**CINCINNATI
INDUSTRIAL
AUCTIONEERS**

auctioneers | appraisers | since 1961

Contact Information
2020 Dunlap St.
Cincinnati, Ohio 45214
Phone 513-241-9701
Fax 513-241-6760
www.cia-auction.com



Salvagnini Systems New as 2011



Cincinnati Press Brakes



(30+) Lift Trucks



HD Bridge Cranes

FIRST CLASS MAIL!

PRE-SORT
FIRST CLASS
U.S. POSTAGE
PAID
CINCINNATI, OHIO
PERMIT NO. 3593

Important Mail

TO BE DIRECTED TO THE ATTENTION OF
EXECUTIVE PERSONNEL

WEDNESDAY, DECEMBER 8TH & THURSDAY, DECEMBER 9TH

WEBCAST AUCTION

Plant Closed

TRANE

1515 Mercer Road
Lexington, Kentucky 40511
3 Miles North of Downtown Lexington

IMPORTANT NOTICE:

Although information has been obtained from sources deemed reliable, the auctioneer makes no warranty or guarantee, expressed or implied, as to the accuracy of the information herein contained. It is for this reason that buyers should avail themselves of the opportunity to make inspection prior to the sale. This brochure is intended to provide general information of the equipment being offered and is subject to errors, omissions, additions or deletions. Please check with the Auctioneer's Office for a final listing. Items offered may or may not necessarily be sold as described and/or photographed in this brochure.

DIRECTIONS

From Cincinnati, Take I-75 South to Exit 120 – Iron Works Pike. Turn Right off the Exit and Drive to Georgetown Road then Turn Left. Drive Approx. 5.4 Miles. Turn Right on Mercer Road, before the Speedway Gas Station. Drive 0.3 Miles to Auction location. Please Use Gate 2 for Entrance.

AUCTIONEERS

Jeffrey L. Luggen – KY License No. RP 7066
Joseph M. Luggen – KY License No. RP 3521

TERMS OF SALE

All equipment described herein will be sold "as is", "where is" to the highest bidder or bidders for cash in accordance with our regular terms and conditions of sale. Unless other satisfactory arrangements are made, a **25% deposit** in cash, certified or cashier's check payable to Cincinnati Industrial Auctioneers, Inc., **is required on all purchases.** Firm and personal checks accepted only if accompanied by a letter from your bank guaranteeing your funds. All sales are subject to state and/or local taxes unless a signed exemption form is presented at the time of purchase. **All balances are due at the conclusion of the sale.** No merchandise may be removed while the sale is in progress. **All bidders must comply with our Standard Terms of Sale,** copies of which will be available at the sale site or can be obtained from our website.

**18% BUYERS PREMIUM IN
EFFECT FOR ALL PURCHASES**



Sale Under The Management Of



CINCINNATI INDUSTRIAL AUCTIONEERS

auctioneers | appraisers | since 1961 | cia-auction.com | info@cia-auction.com
2020 Dunlap St., Cincinnati, Ohio 45214 Phone 513-241-9701 Fax 513-241-6760